



Tinned Copper Connector

Pin Terminal



Fork Terminal

Tinned Copper Ring Terminal

25 years of experience
in copper industries



End Sealing Ferrules



ISO 9001:2015 Certified Company



201, Saffron Premises, Sector - 1,
Plot No. 11, New Panvel, Dist. Raigad,
Pincode L 401206, Maharashtra, INDIA
Contact : Mr. Keshav Bagwe Mobile : 98204 25698
Email : bagwek@gmail.com, universalentmumbai@gmail.com
Website :www.copperlug.net, www.copperlug.com

UNIVERSAL ENTERPRISES

COMPANY PROFILE



Universal Enterprises was established in 2008 and is situated in Taloja, Navi Mumbai. The company is building its reputation on high quality products and on time delivery / service to customers.

Universal Enterprises we manufacture products under "KK" Brand which are produced from high quality raw material.

We have a team of skilled and dedicated manpower which results quality products at the end.

Our intense dedication to research and development in all phases of business activities and the application of the latest manufacturing techniques has enabled us to continuously reduce the manufacturing cost, at the same time update the quality.

QUALITY POLICY

Universal Enterprises are committed to achieving total customer satisfaction. This is our integral part of the fundamental value system of our company.

We shall achieve this by continual improvement of processes, products, services and systems, designed to meet the expectations of the customers and build good relation with them.



Tinned Copper Connector

Pin Terminal



Fork Terminal

Tinned Copper Ring Terminal

25 years of experience
in copper industries



End Sealing Ferrules

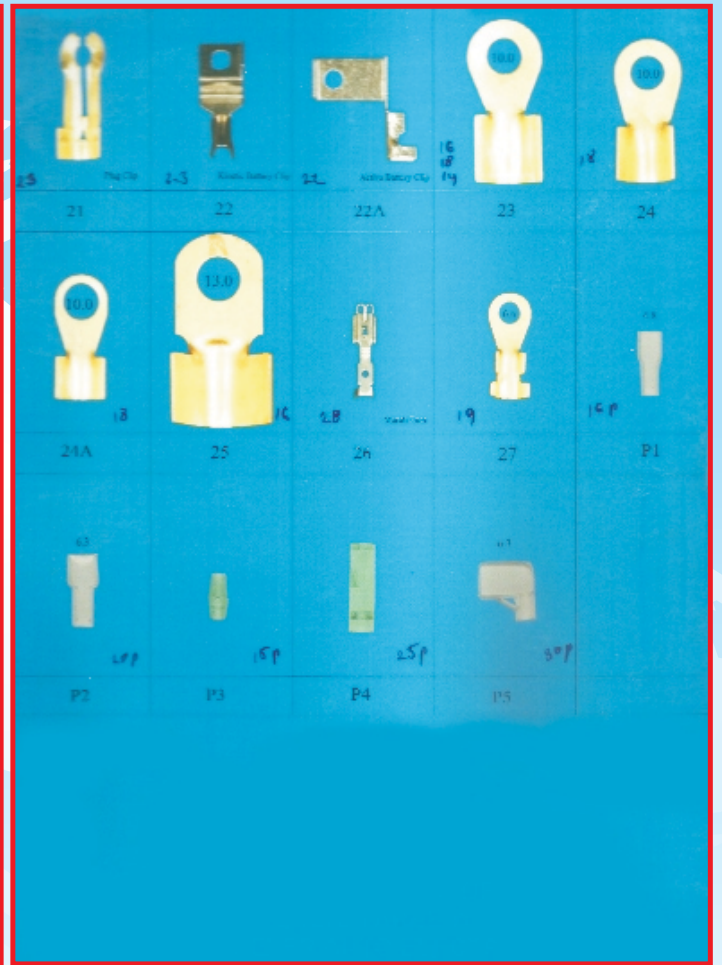


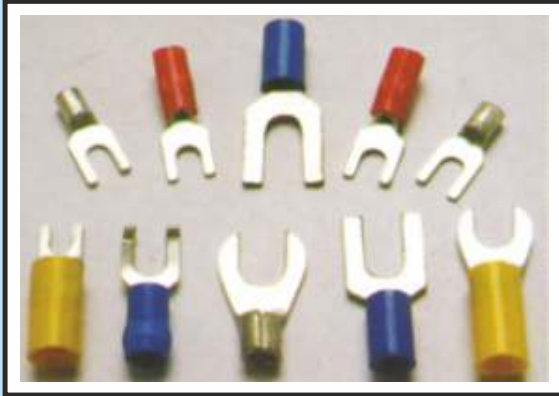
ISO 9001:2015 Certified Company



201, Saffron Premises, Sector - 1,
Plot No. 11, New Panvel, Dist. Raigad,
Pincode L 401206, Maharashtra, INDIA
Contact : Mr. Keshav Bagwe Mobile : 98204 25698
Email : bagwek@gmail.com, universalentmumbai@gmail.com
Website :www.copperlug.net, www.copperlug.com

UNIVERSAL ENTERPRISES



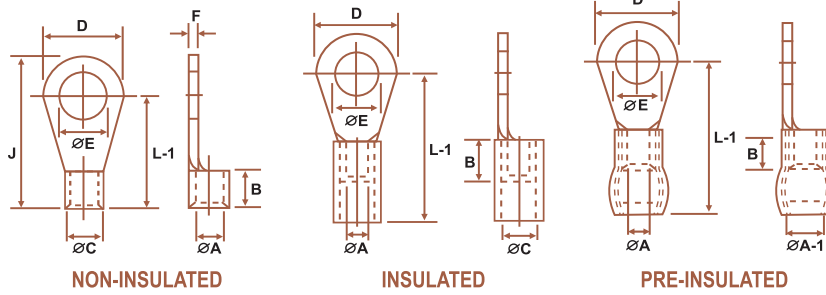


Universal Enterprises

MANUFACTURER OF KK BRAND CABLE TERMINALS
AND LUGS AND PLASTIC MOULDED PARTS.

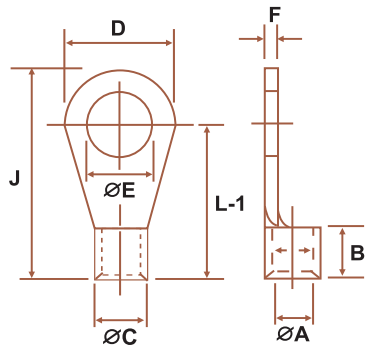
Factory : W-89 (D), Taloja MIDC, Chemical Zone, Dist. Raigad, Pin - 410 208.

RING TERMINALS



MATERIAL : ELETROLYTIC COPPER FINISH : ELECTRO TINNED INSULATION : PVC

NON-INSULATED										INSULATED		PRE-INSULATED		
MM ²	E	ØA	ØC	F	D	B	L-1	J	CAT NO	L-1	CAT NO	A-1	L-1	CAT NO
1.5	M3	1.6	3.2	0.8	6.0	5	11	14	KK-7001	16	KK-7054	3.6	16	KK-7437
1.5	M3.5	1.6	3.2	0.8	6.0	5	11	14	KK-7002	16	KK-7055	3.6	16	KK-7438
1.5	M4	1.6	3.2	0.8	6.0	5	11	14	KK-7003	16	KK-7056	3.6	16	KK-7439
1.5	M3.5	1.6	3.2	0.8	6.8	5	9.6	13	KK-7048	14.6	KK-7058	3.6	14.6	KK-7441
1.5	M4	1.6	3.2	0.8	6.8	5	9.6	13	KK-7049	14.6	KK-7059	3.6	14.6	KK-7442
1.5	M4	1.6	3.2	0.8	8.0	5	12.0	16	KK-7004	17.0	KK-7061	3.6	17.0	KK-7444
1.5	M5	1.6	3.2	0.8	8.0	5	12.0	16	KK-7005	17.0	KK-7062	3.6	17.0	KK-7445
1.5	M4	1.6	3.2	0.8	7.0	5	11.0	14.5	KK-7154	16.0	KK-7063	3.6	16.0	KK-7446
1.5	M5	1.6	3.2	0.8	10	5	13.0	18	KK-7006	18.0	KK-7065	3.6	18.0	KK-7448
1.5	M6	1.6	3.2	0.8	10	5	13.0	18	KK-7007	18.0	KK-7066	3.6	18.0	KK-7449
1.5	M6	1.6	3.2	0.8	12	5	12.0	18	KK-7106	17.0	KK-7067	3.6	17.0	KK-7450
2.5	M3	2.3	3.9	0.8	6.5	5	9.5	12.7	KK-7107	14.5	KK-7068	4.4	17.7	KK-7451
2.5	M3.5	2.3	3.9	0.8	6.5	5	9.5	12.7	KK-7008	14.5	KK-7069	4.4	17.7	KK-7452
2.5	M3.5	2.3	3.9	0.8	8.0	5	12.0	16	KK-7108	17.0	KK-7070	4.4	17.0	KK-7453
2.5	M4	2.3	3.9	0.8	8.0	5	12.0	16	KK-7009	17.0	KK-7071	4.4	17.0	KK-7454
2.5	M5	2.3	3.9	0.8	8.0	5	12.0	16	KK-7010	17.0	KK-7072	4.4	17.0	KK-7455
2.5	M5	2.3	3.9	0.8	10	5	13.0	18	KK-7109	18.0	KK-7073	4.4	18.0	KK-7456
2.5	M6	2.3	3.9	0.8	10	5	13.0	18	KK-701	18.0	KK-7074	4.4	18.0	KK-7457
2.5	M5	2.3	3.9	0.8	12	5	16.0	22	KK-710	21.0	KK-7075	4.4	21.0	KK-7458
2.5	M6	2.3	3.9	0.8	12	5	16.0	22	KK-7012	21.0	KK-7076	4.4	21.0	KK-7459
2.5	M8	2.3	3.9	0.8	12	5	16.0	22	KK-7013	21.0	KK-7077	4.4	21.0	KK-7460
2.5	M8	2.3	3.9	0.8	16	5	17.0	25	KK-7014	22.0	KK-7079	4.4	22.0	KK-7462
2.5	M10	2.3	3.9	0.8	16	5	17.0	25	KK-7015	22.0	KK-7080	4.4	22.0	KK-7463
2.5	M10	2.3	3.9	0.8	18	5	20.0	29	KK-7151	25.0	KK-7081	4.4	25.0	KK-7464
2.5	M12	2.3	3.9	0.8	18	5	20.0	29	KK-7047	25.0	KK-7082	4.4	25.0	KK-7465
4-6	M4	3.5	5.5	1.0	8.0	6	12.0	17	KK-7155	21.0	KK-7083	6.4	22.0	KK-7466
4-6	M5	3.5	5.5	1.0	8.0	6	13.0	17	KK-7050	21.0	KK-7084	6.4	22.0	KK-7467
4-6	M4	3.5	5.5	1.0	10	6	14.0	19	KK-712	22.0	KK-7085	6.4	23.0	KK-7468
4-6	M5	3.5	5.5	1.0	10	6	14.0	19	KK-7016	22.0	KK-7086	6.4	23.0	KK-7469
4-6	M6	3.5	5.5	1.0	12	6	14.0	20	KK-7017	22.0	KK-7089	6.4	23.0	KK-7475
4-6	M8	3.5	5.5	1.0	12	6	14.0	20	KK-7018	22.0	KK-7090	6.4	23.0	KK-7473
4-6	M6	3.5	5.5	1.0	12	6	16.0	22	KK-7019	24.0	KK-7092	6.4	25.0	KK-7472
4-6	M5	3.5	5.5	1.0	8	6	18.8	22.8	KK-7157	26.8	KK-7087	6.4	27.8	KK-7470
4-6	M6	3.5	5.5	1.0	14	6	18.5	25.5	KK-715	26.5	KK-7093	6.4	27.5	KK-7476
4-6	M8	3.5	5.5	1.0	14	6	18.5	25.5	KK-7020	26.5	KK-7094	6.4	27.5	KK-7477
4-6	M8	3.5	5.5	1.0	16	6	22.0	30	KK-716	30.0	KK-7096	6.4	31.0	KK-7479
4-6	M10	3.5	5.5	1.0	16	6	22.0	30	KK-7022	30.0	KK-7097	6.4	31.0	KK-7480
4-6	M10	3.5	5.5	1.0	18	6	21.0	30	KK-7023	29.0	KK-7099	6.4	30.0	KK-7482
4-6	M12	3.5	5.5	1.0	18	6	21.0	30	KK-7024	29.0	KK-7100	6.4	30.0	KK-7483

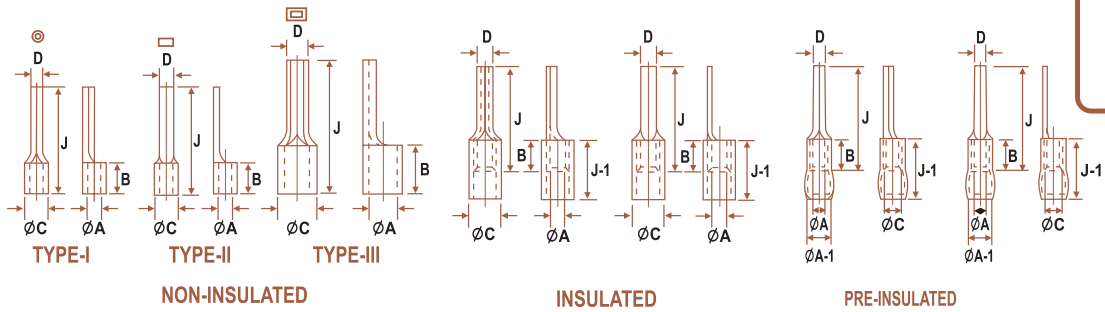


RING TERMINALS (NON-INSULATED)

MATERIAL : ELETRYOTIC COPPER FINISH : ELECTRO TINNED

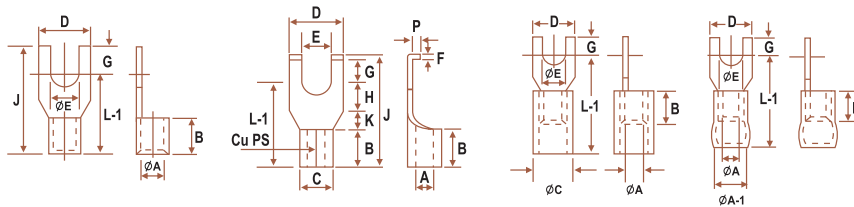
MM ²	ØE BOLT MM	ØA	ØC	D	F	B	L-1	J	CAT NO
10	M4	4.3	6.3	10	1.0	8	17	22	KK-7118
10	M5	4.3	6.3	10	1.0	8	17	22	KK-7025
10	M 4	4.3	6.3	10	1.0	8	15	20	KK-7119
10	M 5	4.3	6.3	10	1.0	8	15	20	KK-7026
10	M 6	4.3	6.3	12	1.0	8	17	23	KK-7120
10	M 8	4.3	6.3	16	1.0	8	19	27	KK-7121
10	M 8	4.3	6.3	18	1.0	8	21	30	KK-7122
10	M 10	4.3	6.3	18	1.0	8	21	30	KK-7027
10	M 10	4.3	6.3	22	1.0	8	23	34	KK-7123
10	M 12	4.3	6.3	22	1.0	8	23	34	KK-7028
16	M 5	5.6	8.0	10	1.2	10	19	24	KK-7124
16	M 5	5.6	8.0	12	1.2	10	20	26	KK-7125
16	M 6	5.6	8.0	12	1.2	10	20	26	KK-7029
16	M 6	5.6	8.0	16	1.2	10	22	30	KK-7126
16	M 8	5.6	8.0	16	1.2	10	22	30	KK-7030
16	M 10	5.6	8.0	16	1.2	10	22	30	KK-7031
16	M 8	5.6	8.0	18	1.2	10	24	33	KK-7127
16	M 10	5.6	8.0	18	1.2	10	24	33	KK-7032
16	M 10	5.6	8.0	22	1.2	10	24	35	KK-7128
16	M 12	5.6	8.0	22	1.2	10	24	35	KK-7033
25	M 6	7.5	11.1	12	1.8	11	25	31	KK-7156
25	M 8	7.5	11.1	12	1.8	11	25	31	KK-7051
25	M 6	7.5	11.1	16	1.8	11	22	30	KK-7129
25	M 8	7.5	11.1	16	1.8	11	22	30	KK-7034
25	M 10	7.5	11.1	16	1.8	11	22	30	KK-7035
25	M 6	7.5	11.1	16	1.8	11	25	33	KK-7130
25	M 8	7.5	11.1	16	1.8	11	25	33	KK-7036
25	M 10	7.5	11.1	18	1.8	11	25	34	KK-7131
25	M 10	7.5	11.1	22	1.8	11	31	42	KK-7132
25	M 12	7.5	11.1	22	1.8	11	31	42	KK-7037
35	M 6	9.0	12.6	16	1.8	12	23	31	KK-7133
35	M 8	9.0	12.6	16	1.8	12	23	31	KK-7038
35	M 8	9.0	12.6	18	1.8	12	27	36	KK-7134
35	M 10	9.0	12.6	18	1.8	12	27	36	KK-7039
35	M 10	9.0	12.6	22	1.8	12	31	42	KK-7135
35	M 12	9.0	12.6	22	1.8	12	31	42	KK-7040
50	M 8	10.5	14.1	18	1.8	16	34	43	KK-7136
50	M 10	10.5	14.1	18	1.8	16	34	43	KK-7041
50	M 10	10.5	14.1	22	1.8	16	32	43	KK-7137
50	M 10	10.5	14.1	24	1.8	16	36	48	KK-7138
50	M 12	10.5	14.1	24	1.8	16	36	48	KK-7042
50	M 16	10.5	14.1	32	1.8	16	38	54	KK-7139
70	M 10	12.0	16.0	22	2.0	18	36	47	KK-7140
70	M 12	12.0	16.0	22	2.0	18	36	47	KK-7043
70	M 12	12.0	16.0	24	2.0	18	36	48	KK-7141
70	M 16	12.0	16.0	28	2.0	18	40	54	KK-7142
95	M 10	13.5	18.1	22	2.3	20	35	46	KK-7143
95	M 10	13.5	18.1	24	2.3	20	38	50	KK-7144
95	M 12	13.5	18.1	24	2.3	20	38	50	KK-7044
95	M 16	13.5	18.1	28	2.3	20	44	58	KK-7145
120	M 12	15.0	20.2	26	2.6	22	39	52	KK-7146
120	M 20	15.0	20.2	40	2.6	22	52	72	KK-7148
150	M 12	16.5	23.7	34	3.6	24	49	66	KK-7149
150	M 16	16.5	23.7	34	3.6	24	49	66	KK-7045
150	M 16	16.5	23.7	40	3.6	24	54	74	KK-7150
150	M 20	16.5	23.7	40	3.6	24	54	74	KK-7046

PIN TERMINALS



MATERIAL : ELELYTIC COPPER FINISH : ELECTRO TINNED

Sr.No.	AREA MM ²	A	C	D	F	E	B	G+H	J	CAT NO.	TYPE	INSULTED	PRE INSULTED
1	1.5	1.6	3.2	1.9	0.8		5	10	17	KK-9	I	KK-17	KK-26
2	1.5	1.6	3.2	2	0.8		5	10	17	KK-35 B	II	KK-40 B	KK-42 B
3	1.5	1.6	3.2	3.1	0.8		5	10	17	KK-35	II	KK-40	KK-42
4	1.5	1.6	3.2	3.1	0.8		5	13	20	KK-35A	II	KK-40A	KK-42A
5	2.5	2.3	3.9	1.9	0.8		5	10	17	KK-1	I	KK-18	KK-27
6	2.5	2.3	3.9	1.9	0.8		5	13	20	KK-1 A	I	KK-18A	KK-27A
7	2.5	2.3	3.9	3.1	0.8		5	10	17	KK-2	II	KK-19	KK-28
8	2.5	2.3	3.9	2	0.8		5	13	20	KK-2 B	II	KK-19 B	KK-28 B
9	2.5	2.3	3.9	3.1	0.8		5	13	20	KK-2 A	II	KK-19A	KK-28A
10	4	2.9	4.9	2.7	1.0		6	10	20	KK-3	I	KK-20	KK-29
11	4.6	3.6	5.6	5.1	1.0		6	10	20	KK-4	I	KK-21	KK-30
12	4.6	3.6	5.6	2.7	1.0		6	10	20	KK-5	II	KK-22	KK-31
13	6	4	6	2.7	1.0		6	10	20	KK-6	I	KK-23	KK-32
14	10	4.5	6.7	4.3	1.1	2.4	8	12	22	KK-7	III	KK-24	
15	16	5.8	8.2	5.5	1.2	2.6	10	13	26	KK-8	III	KK-25	
16	25	7.5	11.1	7	1.8	3.8	11	15	31	KK-86	III		
17	35	9	12.6	8	1.8	3.8	12	15	37	KK-87	III		
18	50	10.5	14.1	9	1.8	3.8	16	17	42	KK-88	III		
19	70	12	16	10	2.0	4.1	16	16	45	KK-94	III		
20	95	13.5	18.1	10	2.3	4.8	20	20	51	KK-95	III		

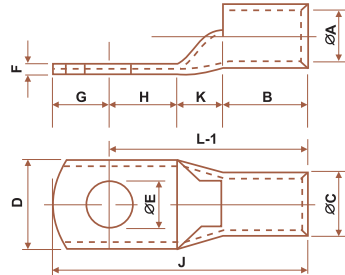


MATERIAL : ELELYTIC COPPER FINISH : ELECTRO TINNED

FORK TERMINALS

Sr.No.	AREA MM ²	E	A	C	D	F	B	L-1	J	CAT NO.	TYPE	INSULTED	PRE INSULTED
1	1.5	5.1	5.1	3.2	8	0.8	5	17	21	KK-7214	I	KK-7925	KK-7934
2	1.5	3.5	3.5	3.2	6.8	0.8	4	8.8	13	KK-7249	I	KK-7926	KK-7935
3	1.5	3.6	3.6	3.2	6.5	0.8	5	10	17	KK-7258A	I	KK-7951A	KK-7975A
4	1.5	3.6	3.6	3.2	6.5	0.8	5	10	15	KK-7258AH	II	KK-7951AH	KK-7975AH
5	2.5	3.5	3.5	3.9	6.5	0.8	5	11.8	15	KK-7251	I	KK-7928	KK-7937
6	2.5	5	5	4.6	10.6	1.0	6.2	12.4	21	KK-7280	I	KK-7929	KK-7938
7	2.5	4.1	4.1	3.9	7.7	0.8	5	10	18	KK-7259	I	KK-7952	KK-7976
8	2.5	4.1	4.1	3.9	7.7	0.8	5	10	16	KK-7259H	II	KK-7952H	KK-7976H
9	2.5	3.6	3.6	3.9	6.5	0.8	5	13	17	KK-7258	I	KK-7951	KK-7975
10	2.5	3.6	3.6	3.9	6.5	0.8	5	13	15	KK-7258H	II	KK-7951H	KK-7975H
11	4.6	3.1	3.1	5.5	6	1.0	6	11.5	15	KK-7252	I	KK-7930	KK-7939
12	4.6	3.5	3.5	5.5	6	1.0	6	11	15	KK-7253	I	KK-7931	KK-7940
13	4.6	3.5	3.5	5.5	6	1.0	6	14.5	19	KK-7253A	I	KK-7931A	KK-7940A
14	4.6	5.1	5.1	5.5	8	1.0	6	14	22	KK-7262	I	KK-7964	KK-7988
15	10	6.5	6.5	6.9	16	1.2	8	19	27	KK-7254	I	KK-7932	KK-7941
16	10	8.2	8.2	6.9	16	1.2	8	19	27	KK-7255	I	KK-7933	KK-7942

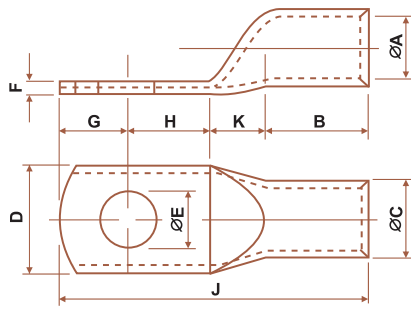
TINNED COPPER HEAVY DUTY CABLE TERMINAL ENDS WITH INSPECTION SLOT



MATERIAL :
COPPER TUBE TO BS 1977/ISI 191 (PART V)
E. C. GRADE 99.25% IACS

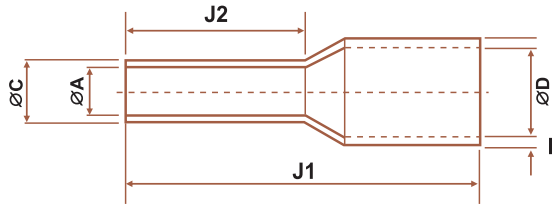
FINISH :
ELECTRO TINNED TO BS 1872 (1984)

MM ²	ØE	ØA	ØC	D	F	G	H	K	B	L-1	J	CAT NO
1.5	5.2	1.8	3.7	8.0	1.0	4	5	2	5	12	16	KK-538
1.5	6.5	1.8	3.7	10.0	0.8	4	5	2	5	13	18	KK-539
2.5	4.2	2.4	4.0	8.0	1.0	5	6	2	7	14	18	KK-388
2.5	5.2	2.4	4.0	10.0	0.8	5	6	2	7	15	20	KK-540
2.5	6.5	2.4	4.0	10.0	0.8	5	6	2	7	15	20	KK-541
4.0	5.2	3.1	4.8	10.0	1.0	5	6	2	7	15	20	KK-389
4.0	6.5	3.1	4.8	10.0	1.0	5	6	2	7	15	20	KK-543
6.0	5.2	3.8	5.5	10.0	1.2	5	6	3	9	18	23	KK-390
6.0	6.5	3.8	5.5	12.0	1.0	6	9	3	9	21	27	KK-544
6.0	8.4	3.8	5.5	12.0	1.0	6	9	3	9	21	27	KK-545
10.0	6.5	4.5	6.2	12.0	1.2	6	7	3	9	19	25	KK-353
10.0	8.4	4.5	6.2	12.0	1.2	6	9	3	9	21	27	KK-547
16	6.5	5.4	7.1	12.0	1.4	7	7	4	12	23	30	KK-354
16	8.4	5.4	7.1	12.0	1.4	7	7	4	12	25	32	KK-549
25	6.5	6.8	8.8	13.0	2.0	7	7	4	12	23	30	KK-355
25	8.4	6.8	8.8	16.0	2.0	7	7	4	12	27	37	KK-551
25	10.5	6.8	8.8	16.0	1.4	10	11	4	12	27	37	KK-552
35	6.5	8.2	10.6	15.3	2.4	9	9	5	12	26	35	KK-542
35	8.4	8.2	10.6	15.3	2.4	9	9	5	12	26	35	KK-356
35	10.5	8.2	10.6	18.0	2.0	10	11	5	12	28	38	KK-554
50	8.4	9.5	12.4	17.8	2.9	10	11	6	16	33	43	KK-357
50	10.5	9.5	12.4	17.8	2.9	10	11	6	16	33	43	KK-556
70	8.4	11.2	14.7	21.0	3.5	12	13	7	18	38	50	KK-557
70	10.5	11.2	14.7	21.0	3.5	12	13	7	18	38	50	KK-358
70	13.0	11.2	14.7	21.0	3.5	12	13	7	18	38	50	KK-559
95	10.5	13.5	17.4	25	3.9	13	13	9	20	42	55	KK-359
95	13.0	13.5	17.4	25	3.9	13	13	9	20	42	55	KK-561
120	13.0	15.0	19.4	28	4.4	14	14	10	22	46	60	KK-241
120	17.0	15.0	19.4	28	4.4	16	16	10	22	48	64	KK-546
150	13.0	16.5	21.2	30	4.7	16	16	11	26	53	69	KK-242
150	17.0	16.5	21.2	30	4.7	16	16	11	26	53	69	KK-564
185	17.0	18.5	23.5	34	5.0	17	17	12	32	61	78	KK-243
240	17.0	21.0	26.5	38	5.5	20	20	14	38	72	92	KK-244
240	21.0	21.0	26.5	38	5.5	20	20	14	38	72	92	KK-567
300	17.0	23.5	30.0	43	6.5	22	22	15	42	79	101	KK-245
300	21.0	23.5	30.0	43	6.5	22	22	15	42	79	101	KK-569
400	17.0	28.5	36.5	50.1	8.0	26	26	18	44	88	114	KK-246
400	21.0	28.5	36.5	50.1	8.0	26	26	18	44	88	114	KK-571
500	21.0	30.0	39.0	56.0	9.0	28	28	20	48	96	124	KK-247
500	17.0	30.0	39.0	56.0	9.0	28	28	20	48	96	124	KK-596
630	-	35.0	45.0	65.0	9	-	-	20	48	-	124	KK-573
630	21.0	35.0	45.0	65.0	10	33	33	22	56	111	144	KK-248
800	-	39.0	50.6	73.5	11.6	-	-	17	78	-	170	KK-599
1000	-	43.0	56.2	81.0	13.2	-	-	20	90	-	200	KK-590



MATERIAL : ELECTROLYTIC COPPER FINISH : ELECTRO TINNED

MM ²	ØE BOLT MM	ØA	ØC	D	F	B	K	H	G	J	CAT NO
2.5	M5	2.0	3.7	9	1.0	7	3	5	5	20	KK-05
4.0	M6	3.1	4.8	11	1.0	7	3	6	6	22	KK-06
6.0	M6	3.8	5.5	11	1.0	9	3	6	6	24	KK-07
10	M6	4.4	6.2	11	1.3	9	3	6	6	24	KK-08
16	M6	5.3	7.1	11	1.6	12	4	8	6	30	KK-09
25	M6	7.0	9.0	13	2.0	12	5	12	8	37	KK-10
35	M6	8.0	10.0	15	2.0	12	5	12	8	37	KK-11
35	M8	8.0	10.0	15	2.0	12	5	12	8	37	KK-12
50	M6	9.2	11.2	16	2.0	16	8	11	10	45	KK-13
50	M8	9.2	11.2	16	2.0	16	8	11	10	45	KK-14
50	M10	9.2	11.2	16	2.0	16	8	11	10	45	KK-15
70	M8	11.5	13.8	20	2.2	18	10	15	13	56	KK-16
70	M10	11.5	13.8	20	2.2	18	10	15	13	56	KK-17
70	M12	11.5	13.8	20	2.2	18	10	15	13	56	KK-18
95	M10	12.8	15.6	23	2.8	20	10	15	13	58	KK-19
95	M12	12.8	15.6	23	2.8	20	10	15	13	58	KK-20
120	M10	14.8	17.8	26	3.0	22	10	16	14	62	KK-21
120	M12	14.8	17.8	26	3.0	22	10	16	14	62	KK-22
120	M16	14.8	17.8	25	3.0	22	10	16	14	62	KK-23
150	M10	16.0	19.6	28	3.6	26	11	18	15	70	KK-24
150	M12	16.0	19.6	28	3.6	26	11	18	15	70	KK-25
150	M16	16.0	19.6	28	3.6	26	11	18	15	70	KK-26
185	M12	18.0	22.0	32	4.0	30	11	21	21	83	KK-27
185	M16	18.0	22.0	32	4.0	30	11	21	21	83	KK-28
225	M16	20.0	24.0	35	4.0	34	13	24	24	95	KK-231
240	M16	22.0	26.0	38	4.0	36	13	24	24	97	KK-29
240	M20	22.0	26.0	38	4.0	36	13	24	24	97	KK-30
300	M16	24.0	28.7	42	4.7	39	13	26	25	103	KK-31
300	M20	24.0	28.7	42	4.7	39	13	26	25	103	KK-32
400	M20	28.0	33.2	49	5.2	44	18	27	27	116	KK-33
500	M20	30.0	36.0	53	6.0	48	18	27	27	120	KK-34
630	M20	35.0	41.5	61	6.5	55	18	33	31	137	KK-35
800		39.0	46.3	67	7.3	65	25	38	37	165	KK-062
1000		43.0	53.8	76	10.8	90	30	45	45	210	KK-076



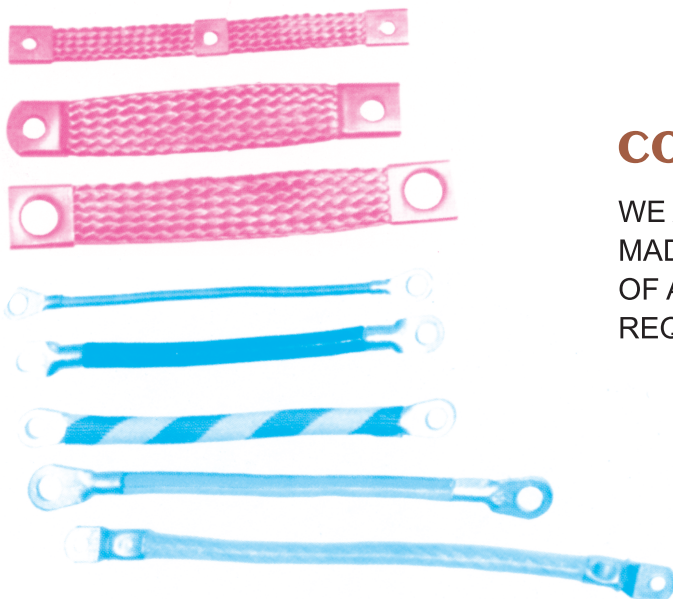
INSULATED END SEALING FERRULES



MATERIAL : ELECTROLYTIC COPPER BS 1977 / IS 191 (PART V)
FINISH : ELECTRO TINNED

MM ²	COLOUR	J2	ϕA	ϕC	D	F	J1	CAT NO.
0.5	WHITE	6	1.1	1.5	2.6	0.5	12	KK-0.5/6
0.5	WHITE	8	1.1	1.5	2.6	0.5	14	KK-0.5/8
0.5	WHITE	10	1.1	1.5	2.6	0.5	16	KK-0.5/10
0.75	BLUE	8	1.5	1.9	2.8	0.5	14	KK-0.75/8
0.75	BLUE	10	1.5	1.9	2.8	0.5	16	KK-0.75/10
1.0	RED	8	1.7	2.1	3.3	0.5	14	KK-1.0/8
1.0	RED	10	1.7	2.1	3.3	0.5	16	KK-1.0/10
1.0	RED	12	1.7	2.1	3.3	0.5	18	KK-1.0/12
1.5	BLACK	8	1.9	2.3	3.5	0.5	14	KK-1.5/8
1.5	BLACK	10	1.9	2.3	3.5	0.5	16	KK-1.5/10
2.5	BLUE	8	2.4	2.8	4.2	0.5	14	KK-2.5/8
2.5	BLUE	12	2.4	2.8	4.2	0.5	18	KK-2.5/12
4	GREY	10	2.9	3.3	4.8	0.5	16	KK-4/10
4	GREY	12	2.9	3.3	4.8	0.5	18	KK-4/12
6	GREEN	10	3.8	4.2	6.3	0.5	18	KK-6/10
6	GREEN	12	3.8	4.2	6.3	0.5	20	KK-6/12
6	GREEN	15	3.8	4.2	6.3	0.5	23	KK-6/15
10	BROWN	15	4.7	5.1	7.6	0.7	25	KK-10/15
10	BROWN	18	4.7	5.1	7.6	0.7	28	KK-10/18
16	WHITE	12	6.0	6.4	8.8	0.7	24	KK-16/12
16	WHITE	15	6.0	6.4	8.8	0.7	27	KK-16/15
25	YELLOW	22	7.3	7.7		0.7		KK-25/22
35	BLUE	25	8.3	8.7		0.7		KK-35/25
50	BLUE	25	10.3	10.7		0.7		KK-50/25

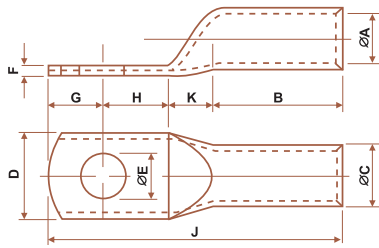
BIGGER SIZE CAN BE MANUFACTURED AGAINST SPECIFIC REQUIREMENT AND IN REQUIRED COLOURS.
 THE END SEALING FERRULES / BOOTLACE PINS ARE SUITABLE TO USE IN TERMINAL BLOCKS AND CAPTIVE TERMINALS.



COPPER FLEXIBLE LINKS

WE ALSO MAKE FLEXIBLE LINKS MADE FROM BARE, TINNED COPPER OF ANY DIAMETER AS PER CUSTOMERS REQUIREMENT.

COPPER TUBE TERMINALS HEAVY DUTY LONG BARREL

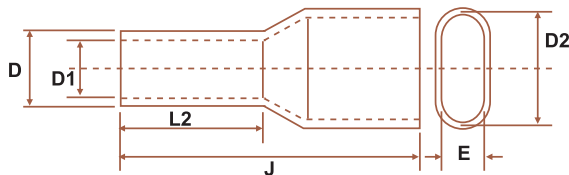


MATERIAL :
COPPER TUBE TO BS 1977/ISI191 (PART V)
E. C. GRADE 99.25% IACS

FINISH :
ELECTRO TINNED TO BS 1872 (1984)

MM ²	ØE BOLT	ØA	ØC	D	F	B	K	H	G	J	CAT NO
25	M8	7.0	9.0	13	2.0	16	5	12	8	41	KK-282
35	M8	8.0	10.6	15	2.6	20	5	14	9	48	KK-283
50	M8	9.2	12.2	17	3.0	26	7	16	10	59	KK-284
70	M10	11.5	15.0	20	3.5	28	7	19	12	66	KK-285
95	M12	12.8	17.0	24	4.2	32	10	20	12	74	KK-286
120	M12	14.8	19.6	28	4.8	35	10	23	14	82	KK-287
150	M12	16.0	21.2	30	5.2	38	10	24	14	86	KK-288
185	M12	18.0	24.0	34	6.0	43	12	23	17	95	KK-289
240	M16	22.0	28.0	40	6.0	50	12	30	20	112	KK-290
300	M20	23.5	30.0	43	6.5	55	12	31	22	120	KK-291
400	M20	26.8	34.8	50	8.0	58	12	40	25	135	KK-292

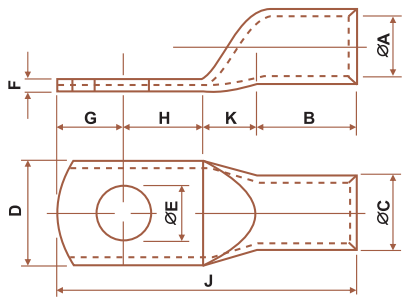
TWIN INSULATED PIN TERMINALS



MATERIAL : ELECTROLYTIC COPPER BS 1977 / IS 191 (PART V) **FINISH :** ELECTRO TINNED
Size 0.5mm² to 6mm² are available with colour codin.

The twin wire Boot Less Pin Terminal range is specially designed to terminate 2 wires in the same terminal. With the development of smaller switches & devices, housings have become smaller. The twin wire Boot Less Pin Terminal solves these problems in a quick and easy way.

Sr.No.	SIZE MM ²	COLOUR	L2	D	D1	D2	E	J	CAT. NO.
1	0.5	WHITE	8	1.8	1.5	5	2.5	14.5	KK-508D/8
2	0.5	WHITE	10	1.8	1.5	5	2.5	16.5	KK-508D/10
3	0.75	BLUE	8	2.1	1.8	5.5	2.8	15.5	KK-509D/8
4	0.75	BLUE	10	2.1	1.8	5.5	2.9	16.5	KK-509D/10
5	1	RED	8	2.4	2.1	5.5	3.4	15	KK-510D/8
6	1	RED	10	2.4	2.1	5.5	3.4	17	KK-510D/10
7	1.5	BLACK	10	2.6	2.3	6.4	3.6	15.5	KK-513D/10
8	1.5	BLACK	12	2.3	2.3	6.4	3.6	17.5	KK-513D/12
9	2.5	BLUE	10	3.3	2.9	8	4.2	18.5	KK-515D/10
10	2.5	BLUE	12	3.3	2.9	8	4.2	20.5	KK-515D/12



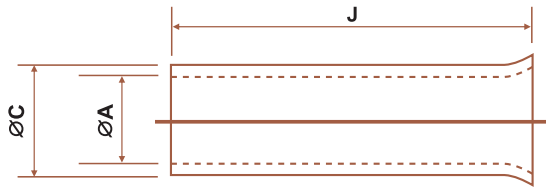
ALUMINIUM TUBE TERMINALS



MATERIAL : ELECTROLYTIC ALUMINIUM TO IS 5082 GR TI-E-IS 8309
FINISH : NATURAL

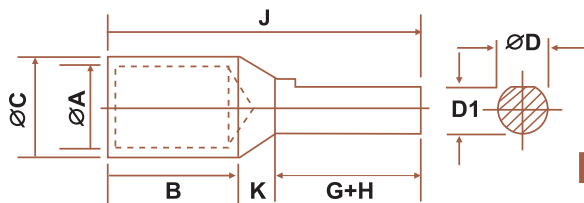
MM ²	ØE	ØA	ØC	D	F	B	K	G + H	J	CAT NO
2.5	M3	2.0	5.5	7.0	3.5	7	3	8	18	KK-151
2.5	M3.5	2.6	5.5	7.0	2.9	7	3	8	18	KK-309
4	M4	2.9	5.5	7.0	2.6	7	3	8	18	KK-155
4	M5	2.9	5.5	12.0	1.2	7	4	13	24	KK-317
6	M5	3.5	5.5	8.0	2.0	7	4	13	24	KK-158
6	M6	3.5	5.5	12.0	1.1	7	4	13	24	KK-313
10	M6	4.4	7.2	10.0	2.8	9	4	17	30	KK-214
10	M8	4.4	7.2	15.0	1.8	9	4	17	30	KK-215
16	M6	5.4	8.3	11.0	2.9	13	4	20	37	KK-252
16	M8	5.4	8.3	11.0	2.9	13	4	20	37	KK-216
16	M10	5.4	8.3	18.0	1.8	13	4	20	37	KK-217
25	M8	7.0	9.7	14.0	3.0	16	7	21	44	KK-218
25	M10	7.0	9.7	20.0	1.7	16	7	21	44	KK-219
25	M12	7.0	9.7	20.0	1.7	16	7	21	44	KK-220
35	M8	8.0	10.8	15.0	2.8	18	7	22	47	KK-221
35	M10	8.0	10.8	20.0	2.1	18	7	22	47	KK-222
50	M8	9.3	13.0	18.0	3.7	22	8	24	54	KK-255
50	M10	9.3	13.0	23.0	2.8	22	8	24	54	KK-312
50	M12	9.3	13.0	23.0	2.8	22	8	24	54	KK-224
70	M8	11.6	16.0	22.0	4.4	26	8	26	60	KK-256
70	M10	11.6	16.0	22.0	4.4	26	8	26	60	KK-225
70	M12	11.6	16.0	22.0	4.4	26	8	26	60	KK-226
95	M10	12.9	17.1	25.0	4.2	28	8	28	64	KK-227
95	M12	12.9	17.1	25.0	4.2	28	8	28	64	KK-228
95	M16	12.9	17.1	25.0	4.2	28	8	28	64	KK-229
120	M10	15.0	19.6	28.0	4.8	32	11	30	73	KK-257
120	M12	15.0	19.6	28.0	4.8	32	11	30	73	KK-230
120	M16	15.0	19.6	28.0	4.8	32	11	30	73	KK-231
150	M10	16.5	21.5	31.0	5.1	34	11	34	79	KK-258
150	M12	16.5	21.5	31.0	5.1	34	11	34	79	KK-232
150	M16	16.5	21.5	31.0	5.1	34	11	34	79	KK-233
185	M10	18.5	24.0	34.0	5.7	36	12	36	84	KK-311
185	M12	18.5	24.0	34.0	5.7	36	12	36	84	KK-234
185	M16	18.5	24.0	34.0	5.7	36	12	36	84	KK-235
225	M12	21.0	27.0	39.0	6.4	40	14	40	94	KK-320
240	M12	22.0	28.6	40.0	6.0	44	14	44	102	KK-236
240	M16	22.0	28.6	40.0	6.0	44	14	44	102	KK-237
300	M16	25.0	32.0	45.7	7.0	47	14	54	115	KK-300
300	M20	25.0	32.0	45.7	7.0	47	14	54	115	KK-259
400	M20	29.0	37.5	51.0	8.0	56	13	61	130	KK-260
500	M20	31.0	41.0	58.0	11.0	60	15	65	140	KK-296
630	M20	36.0	46.0	66.0	11.0	69	16	69	154	KK-261
800	M20	39.0	51.0	73.0	12.0	77	25	78	180	KK-318
1000	-	43.5	57.0	81.0	13.5	100	30	90	220	KK-319

END SEALING FERRULES



MATERIAL : ELECTROLYTIC COPPER BS 1977 / IS 191 (PART V)
FINISH : ELECTRO TINNED

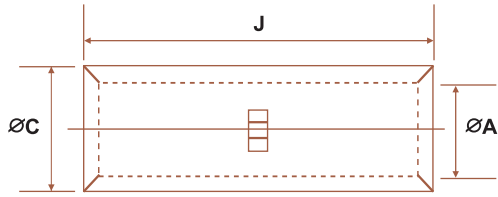
MM ²	øA	øC	J	CAT NO
0.5	1.0 - 1.1	1.4 - 1.5	6	KK-508
0.75	1.4 - 1.5	1.8 - 1.9	6	KK-509
1.0	1.6 - 1.7	2.0 - 2.1	6	KK-510
1.0	1.6 - 1.7	2.0 - 2.1	10	KK-511
1.5	1.8 - 1.9	2.2 - 2.3	7	KK-512
1.5	1.8 - 1.9	2.2 - 2.3	10	KK-513
2.5	2.3 - 2.4	2.7 - 2.8	7	KK-514
2.5	2.3 - 2.4	2.7 - 2.8	12	KK-515
4.0	2.8 - 2.9	3.2 - 3.3	9	KK-516
4.0	2.8 - 2.9	3.2 - 3.3	12	KK-517
6.0	3.7 - 3.8	4.1 - 4.2	10	KK-518
6.0	3.7 - 3.8	4.1 - 4.2	12	KK-519
6.0	3.7 - 3.8	4.1 - 4.2	15	KK-520
10	4.6 - 4.7	5.0 - 5.1	12	KK-521
10	4.6 - 4.7	5.0 - 5.1	15	KK-522
10	4.6 - 4.7	5.0 - 5.1	18	KK-523
16	5.9 - 6.0	6.3 - 6.4	12	KK-524
16	5.9 - 6.0	6.3 - 6.4	15	KK-525
16	5.9 - 6.0	6.3 - 6.4	18	KK-526
25	7.3	7.7	16	KK-527
35	8.3	8.7	16	KK-528



END REDUCER TERMINALS

MATERIAL : ELECTROLYTIC COPPER BS 1977 / IS 191 (PART V)
FINISH : ELECTRO TINNED

MM ²	øA	øC	øD	D-1	B	K	G+H	J	CAT NO.
2.5	2.5	4.7	3.8	3.3	6	4	10	20	KK-7
4	2.8	4.7	3.8	3.3	6	4	10	20	KK-16
6	3.1	4.7	3.8	3.3	6	4	10	20	KK-18
10	3.8	5.5	3.8	3.3	9	4	10	23	KK-20
10	4.4	6.2	3.8	3.3	9	4	10	23	KK-22
16	5.3	7.1	3.8	3.3	13	4	13	30	KK-2
25	7.0	9.0	6.0	5.5	12	5	15	32	KK-25
35	8.0	10.0	7.5	6.5	12	5	20	37	KK-4
50	9.2	11.2	7.5	6.5	16	5	20	41	KK-26
70	11.3	13.8	7.5	6.5	18	5	20	43	KK-27
95	12.8	15.6	11.5	10.5	20	6	25	51	KK-29
120	14.8	17.8	11.5	10.5	22	6	32	60	KK-35
150	16	19.6	11.5	10.5	26	6	32	64	KK-37
185	18.0	22.0	11.5	10.5	32	6	32	70	KK-38
225	20.0	26.0	15.6	14.0	38	8	32	78	KK-39
240	21.2	26.0	15.6	14.0	38	8	32	78	KK-43
300	24.0	28.7	16.0	15.0	43	8	42	92	KK-45
400	27.0	33.2	15.6	14.0	46	12	32	90	KK-101

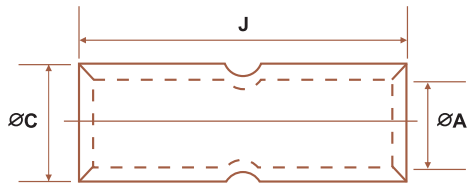


COPPER TUBE IN-LINE CONNECTORS



MATERIAL : ELECTROLYTIC COPPER FINISH : ELECTRO TINNED

MM ²	ØA	ØC	J	CAT NO
1.5	1.6	3.2	15	KK-453
2.5	2.4	4.0	15	KK-454
4.6	3.5	5.5	15	KK-455
4.0	3.1	4.8	15	KK-3
6.0	3.8	5.5	15	KK-4
10	4.5	6.2	20	KK-460
16	5.4	7.1	20	KK-6
25	6.8	8.8	32	KK-24
35	8.2	10.6	36	KK-25
50	9.5	12.4	40	KK-26
70	11.2	14.7	40	KK-51
95	13.5	17.4	45	KK-52
120	15.0	19.4	45	KK-53
150	16.5	21.2	55	KK-54
185	18.5	23.5	65	KK-55
240	21.0	26.5	80	KK-56
300	23.5	30.0	85	KK-57
400	26.8	34.8	90	KK-58
500	30.0	39.0	100	KK-59
630	35.0	45.0	110	KK-61

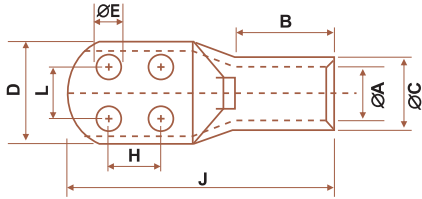


COPPER TUBE IN-LINE CONNECTORS

MATERIAL : ELECTROLYTIC COPPER FINISH : ELECTRO TINNED

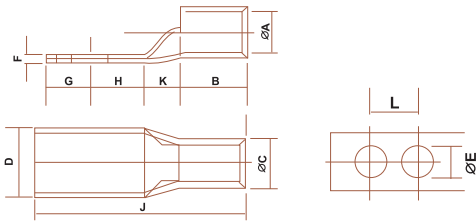
MM ²	ØA	ØC	J	CAT NO
1.5	1.8	3.7	12	KK-41
2.5	2.4	4.0	15	KK-454
4.0	3.1	4.8	15	KK-3
6.0	3.8	5.5	15	KK-4
10	4.5	6.2	20	KK-460
16	5.4	7.1	20	KK-6
20	6.0	7.7	22	KK-47
25	6.8	8.8	32	KK-24
35	8.2	10.6	36	KK-25
50	9.5	12.4	40	KK-26
70	11.2	14.7	40	KK-51
95	13.5	17.4	45	KK-52
120	15.0	19.4	45	KK-53
150	16.5	21.2	55	KK-54
185	18.5	23.5	65	KK-55
240	21.0	26.5	80	KK-56
300	23.5	30.0	85	KK-57
400	26.8	34.8	90	KK-58
500	30.0	39.0	100	KK-59
550	31.7	41.4	100	KK-60
630	35.0	45.0	110	KK-61
800	39.0	50.6	150	KK-42
1000	43.0	56.2	170	KK-43

CRIMPING TYPE TINNED COPPER TRANSFORMER TERMINAL ENDS



MATERIAL : ELECTROLYTIC COPPER **FINISH :** ELECTRO TINNED

MM ²	ØE	ØA	ØC	D	B	L	H	J	CAT NO	
500	8.5	30	39	56	48	30	25	124	KK-500	4-M8
500	10.5	30	39	56	48	30	25	124	KK-500	4-M10
630	8.5	35	45	65	56	34	35	144	KK-630	4-M8
630	10.5	35	45	65	56	34	35	144	KK-630	4-M10



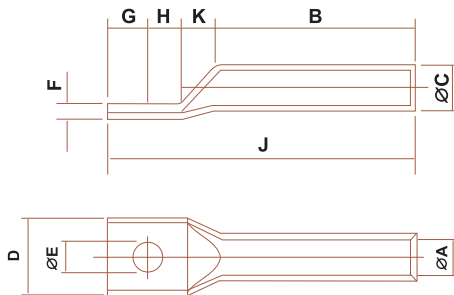
CRIMPING TYPE TINNED COPPER EXTENDED PALM / 2 HOLE LUGS

MATERIAL : ELECTROLYTIC COPPER **FINISH :** ELECTRO TINNED

CENTRE DISTANCE 'L' AND HOLE SIZE 'E' AS PER CUSTOMERS REQUIREMENT.

MM ²	ØA	ØC	D	F	B	K	G+H	J	CAT NO.
50	9.5	12.4	18	2.9	16	6	42	64	KK-466
70	11.2	14.7	21	3.5	18	7	50	75	KK-467
95	13.5	17.4	25	3.9	20	9	52	81	KK-468
120	15.0	19.4	28	4.4	22	10	56	88	KK-469
150	16.5	21.2	30	4.7	26	11	64	101	KK-470
185	18.5	23.5	34	5.0	32	12	68	112	KK-471
240	21.0	26.5	38	5.5	38	14	80	132	KK-472
300	23.5	30.0	43	6.5	42	15	88	145	KK-473
400	28.5	36.5	53	8.0	44	18	104	166	KK-474
500	30.0	39.0	56	9.0	48	20	112	180	KK-475
625	35.0	45.0	65	10.0	56	22	132	210	KK-476

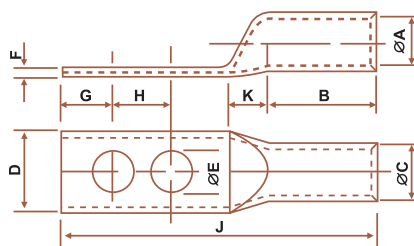
ALUMINIUM TERMINAL ENDS LONG BARREL FOR AL-XLPE CONDUCTORS



MATERIAL : ELECTROLYTIC ALUMINIUM TO IS 5082

FINISH : NATURAL

MM ²	ØE	ØA	ØC	D	F	B	K	H	G	J	CAT NO
25	8.2	7.2	9.6	14.0	2.4	41	7	12	9	69	KK-XL-17
35	8.2	8.3	11.	16.0	2.8	50	7	11	11	79	KK-XL-18
50	10.2	10.1	13.5	19.5	3.4	49	8	13	11	81	KK-XL-19
70	10.2	10.2	14.5	20.5	4.3	62	8	13	13	96	KK-XL-20
95	13.0	12.0	16.9	23.5	4.9	73	8	14	14	109	KK-XL-21
120	13.0	13.7	19.0	26.5	5.3	73	11	15	15	114	KK-XL-22
150	13.0	15.1	21.1	29.5	6.1	83	11	17	17	128	KK-XL-23
185	13.0	16.6	23.9	33.0	7.3	83	12	18	18	121	KK-XL-24
225	13.0	18.6	26.1	36.0	7.5	86	14	20	20	140	KK-XL-25
240	13.0	19.3	27.2	37.5	7.9	86	14	22	22	144	KK-XL-26
300	20.3	21.8	30.2	42.0	8.4	89	14	27	27	157	KK-XL-27
400	20.3	25.0	34.8	48.0	9.8	113	13	30	30	187	KK-XL-28
500	20.3	28.2	39.1	54.0	11.0	125	15	32	32	205	KK-XL-29
630	20.3	31.7	44.4	61.0	13.0	140	16	34	34	225	KK-XL-30
800	20.3	35.7	49.5	68.0	13.8	147	25	39	39	250	KK-XL-31
1000	20.3	41.0	56.0	77.5	15.0	160	30	45	45	280	KK-XL-32



ALUMINIUM TUBE TERMINALS - TWO HOLES

MATERIAL : ELECTROLYTIC ALUMINIUM TO IS 5082
FINISH : NATURAL

MM ²	ØE	ØA	ØC	D	F	B	K	G + H	J	CAT NO
150	M16	16.1	21.2	30.5	5.2	70.5	10.0	55.4	151.5	KK-701
240	M12	21.5	28.0	41.0	6.0	64.0	14.0	62.3	164.8	KK-702
300	M16	24.0	31.0	45.0	7.0	99.5	16.2	77.6	211.5	KK-703
300	M20	24.0	31.0	45.0	7.0	99.5	16.2	77.6	211.5	KK-704
300	M16	25.0	32.0	46.3	7.0	105	14.0	70.0	218.0	KK-705
600	M20	36.0	46.0	65.9	10.0	100	16.0	104.0	255.0	KK-706